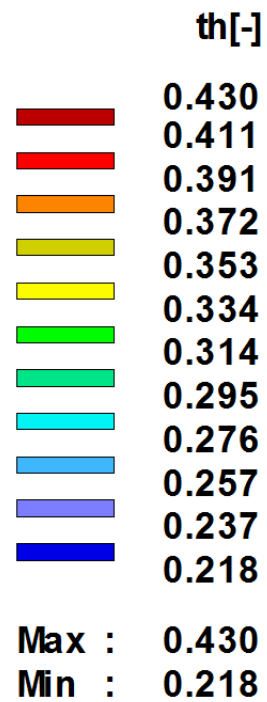
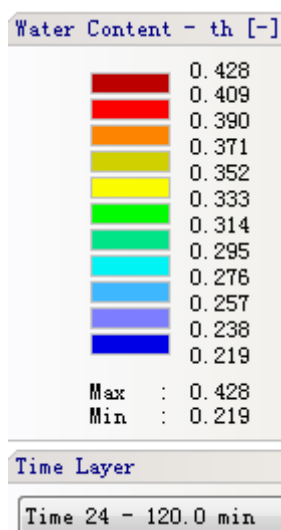
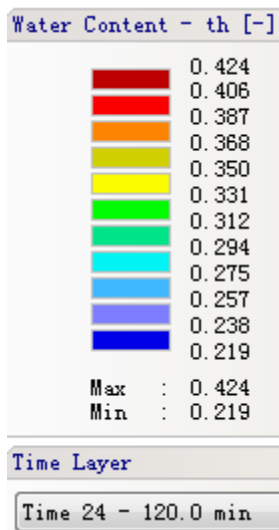
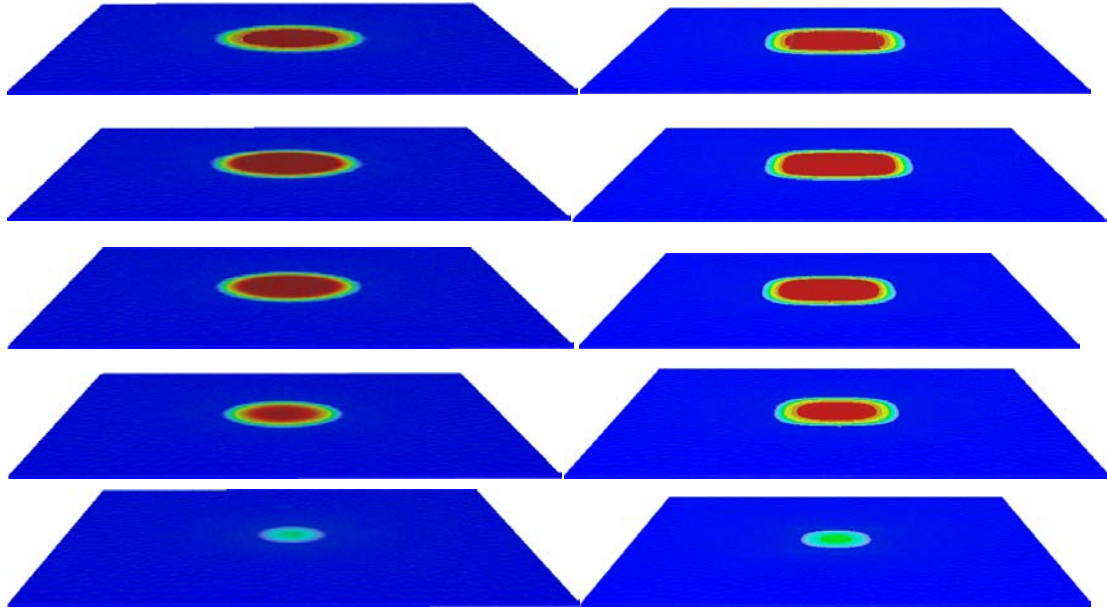
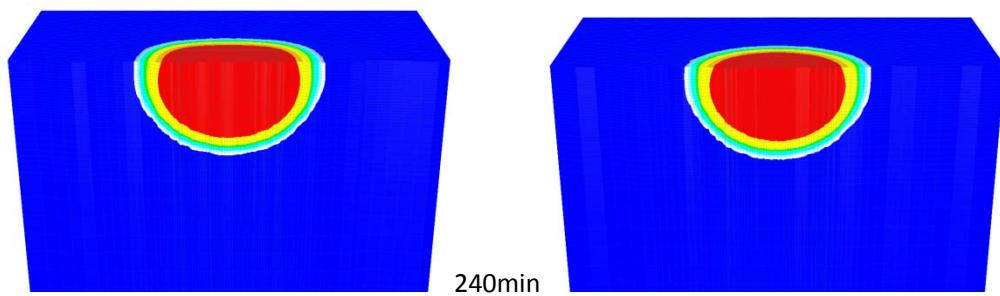
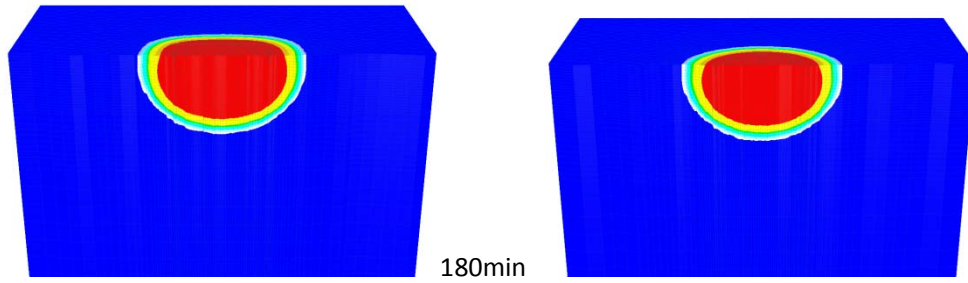
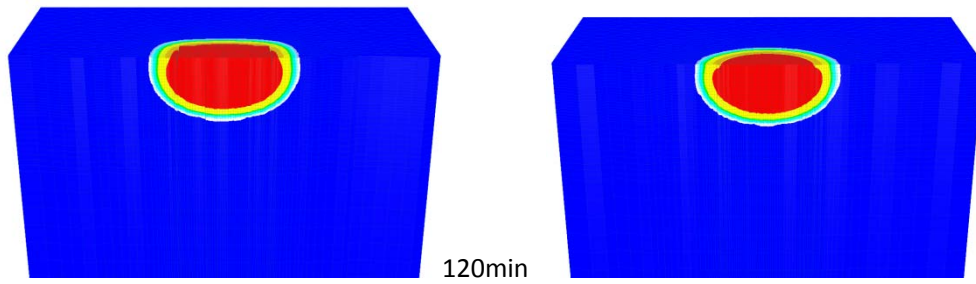
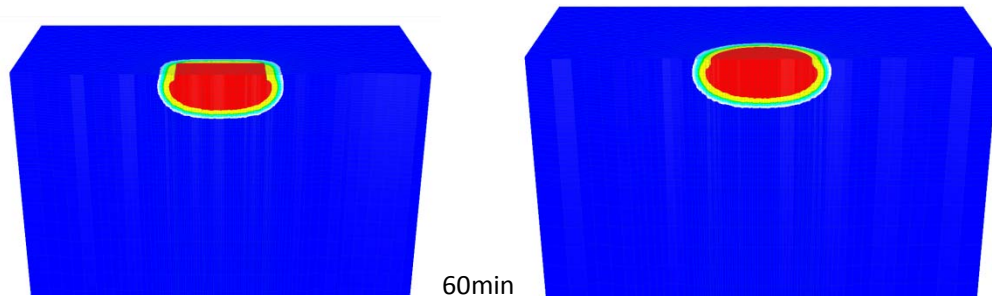
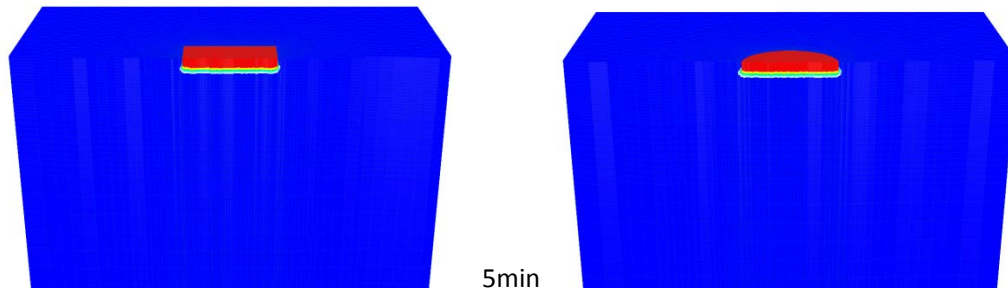


Enlarged Infiltration Area



Rec3000_Loam_High initial water content
Depth: 1cm, 5cm, 10cm, 15cm, 20cm



0.218 0.237 0.257 0.276 0.295 0.314 0.334 0.353 0.372 0.391 0.411 0.430



Water Content - th[-], Min=0.218, Max=0.430