

# Southwest HYDROLOGY

The Resource for Semi-Arid Hydrology

Volume 3/Number 4

July/August 2004



## Management of Terminal Lakes

Southwest Hydrology  
University of Arizona - SAHRA  
P.O. Box 210158-B  
Tucson, AZ  
85721-0158

Address Service Requested

## Review of HYDRUS-1D

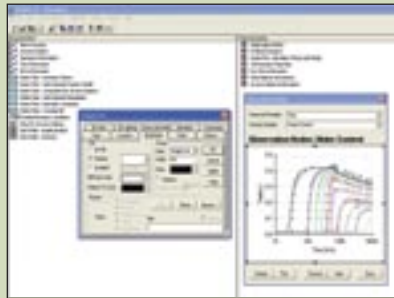
**Bridget Scanlon, Ph.D.** – University of Texas at Austin

HYDRUS-1D is one of the most widely used codes for unsaturated flow and solute transport modeling. It is a finite element model that solves Richards' equation for flow. It has options for nonisothermal liquid and vapor flow and heat transport. Constitutive relationships include van Genuchten and Brooks-Corey water retention functions. Information on soil texture can be used along with pedotransfer functions to determine water retention and hydraulic conductivity parameters. The code includes inverse modeling capabilities for estimating hydraulic and transport parameters. The upper boundary condition includes standard constant pressure and constant flux conditions in addition to meteorological forcing. Options for the lower boundary condition include unit gradient and seepage face.

Developed as a collaborative effort of the U.S. Salinity Laboratory and University of California at Riverside, HYDRUS-1D is computationally efficient, well-supported, continually updated, and available free of charge. A graphical user interface can be used for data input and to view simulation results. The code has been used to solve a wide variety of problems, such as the direct and inverse examples provided with the code, and also water balance modeling, recharge estimation, engineered cover performance, nitrate and pesticide leaching, and chlorinated hydrocarbon transport. A 2-D version of the code is also available. New features being tested include virus transport, colloid and colloid-facilitated transport, and preferential flow. Technical documentation includes a theory manual, online help, and tutorials, all available on the Web site where the code may be downloaded at [www.mines.edu/~igwmc](http://www.mines.edu/~igwmc) by selecting "Software," "H," then "HYDRUS-1D."

Contact Bridget Scanlon at [www.beg.utexas.edu/staffinfo/scanlon01.htm](http://www.beg.utexas.edu/staffinfo/scanlon01.htm)

## HYDRUS-1D Software Review



Reviewer: **Bridget Scanlon, Ph.D.** – University of Texas at Austin

**Application:** Unsaturated zone flow and transport

**Best Feature:** Wide range of capabilities

**GUI:**

**Worst Feature:** Error reporting

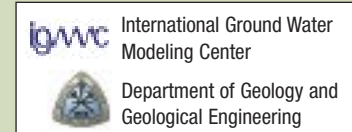
**Output/Plotting:**

**Documentation:**

**OVERALL RATING:**

**Speed:**

### Rating System for graphics:



### Errol L. Montgomery & Associates, Inc.

Consultants in Hydrogeology

Tucson, Arizona  
(520) 881.4912

Scottsdale, Arizona  
(480) 948.7747

Santiago de Chile  
011 (562) 246.4275

Recharge & Recovery  
Water Quality Compliance  
Groundwater Resources Development  
Contamination Assessment & Remediation  
Surface Water/Groundwater Interaction  
Environmental Monitoring  
Mining Hydrology

[www.elmontgomery.com](http://www.elmontgomery.com)

### Selected recent USGS hydrology publications from around the Southwest:

*Water resources data for Arizona, water year 2003*, by G.G. Fisk, N.R. Duet, D.W. Evans, C.E. Angeroth, N.K. Castillo, and S.A. Longworth.  
<http://water.usgs.gov/pubs/wdr/WDR-AZ-03-1>

*Concentrations of dissolved solids and nutrients in water sources and selected streams of the Santa Ana Basin, California, October 1998-September 2001*, by Robert Kent and Kenneth Belitz.  
<http://water.usgs.gov/pubs/wri/wri034326>

*Estimates of hydraulic properties from a one-dimensional numerical model of vertical aquifer-system deformation, Lorenzi site, Las Vegas, Nevada*, by M.T. Pavelko.  
<http://water.usgs.gov/pubs/wri/wri034083>

*Quality and sources of ground water used for public supply in Salt Lake Valley, Salt Lake County, Utah, 2001*, by S.A. Thiros and A.H. Mannings.  
<http://water.usgs.gov/pubs/wri/wri034325>

U.S. Geological Survey, Arizona District • <http://az.water.usgs.gov>